

# Map for Burkhart Creek Park Shrubs

## SHRUBS

Silky Dogwood/*cornus amomum* 24

Blackhaw/*viburnum rufidulum* 25

Flowering Dogwood/*cornus florida* 1

Rough-Leaved Dogwood/*cornus drummondii* 2

Autumn Olive/*elaeanthus umbellata*\* 3

Red Mulberry/*morus rubra* 4

Pawpaw/*asimina triloba* 5

Maple-Leaved Viburnum/*viburnum acerifolium* 6

Wild Hydrangea/*hydrangea arborescens* 7

Spicebush/*lindera benzoin* 8

Multiflora Rose/*rosa multiflora*\* 9

Gooseberry(eastern prickly)/*ribes cynosbati* 10

Black Raspberry/*rubus occidentalis* 11

Blackberry/*rubus allegheniensis* 12

Prairie Rose/*rosa setigera* 13

Virginia Creeper/*parthenocissus quinquefolia* 14

Poison Ivy/*toxicodendron radicans* 15

Elderberry/*sambucus canadensis* 16

Running Strawberry Bush/*euonymus obovatus* 17

Winged Hazelnut/*corylus cornuta* 18

Gray Dogwood/*cornus racemosa* 19

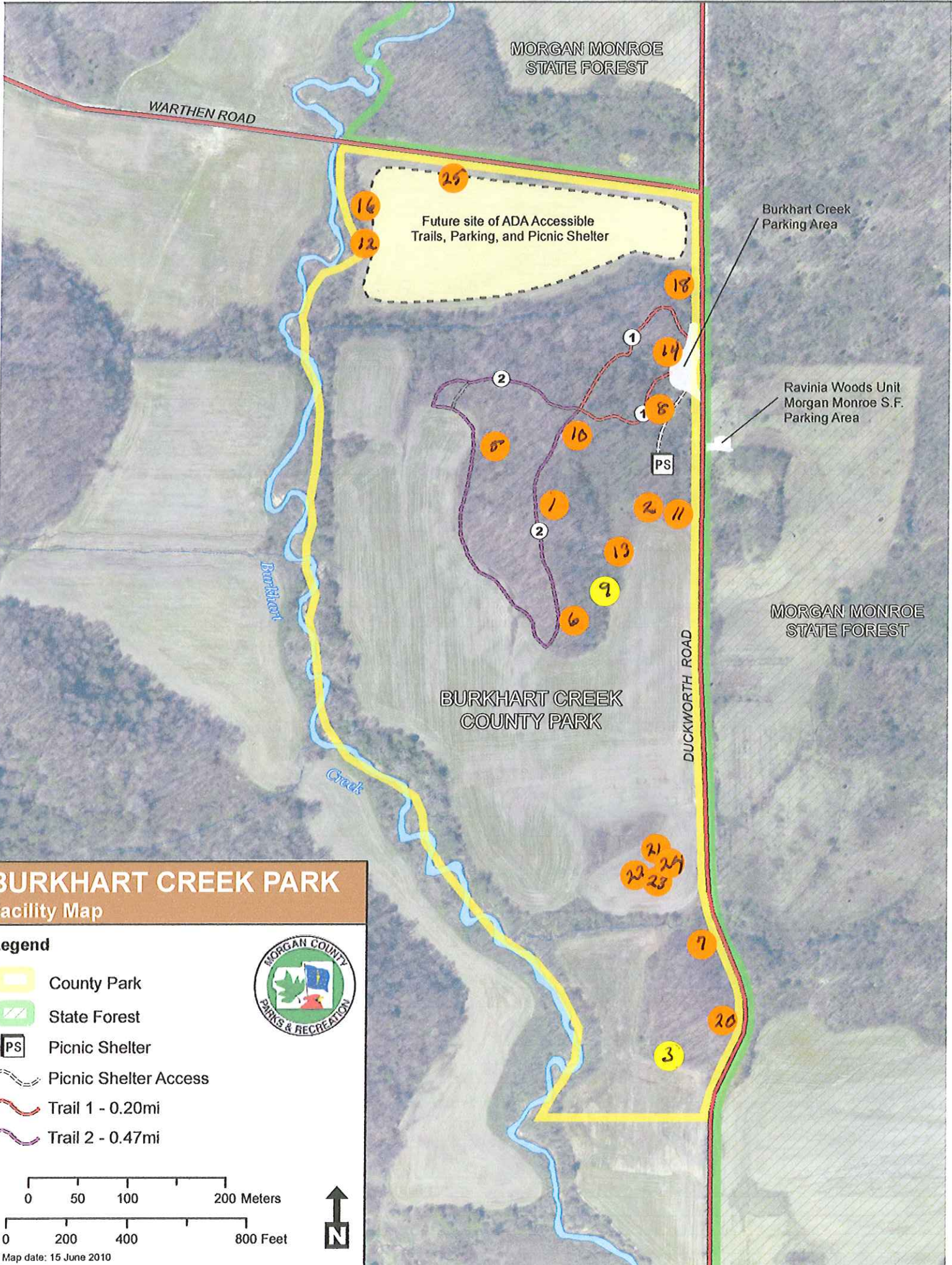
Wahoo/*euonymus atropurpureus* 20

Black Chokeberry/*aronia melanocarpa* 21

Common Ninebark/*physocarpus opulifolius* 22

Winterberry/*flex verticillata* 23

\*INVASIVE 



MORGAN MONROE STATE FOREST

WARTHEN ROAD

Future site of ADA Accessible Trails, Parking, and Picnic Shelter

Burkhart Creek Parking Area

Ravinia Woods Unit Morgan Monroe S.F. Parking Area

MORGAN MONROE STATE FOREST

BURKHART CREEK COUNTY PARK

DUCKWORTH ROAD

**BURKHART CREEK PARK**  
Facility Map

**Legend**

-  County Park
-  State Forest
-  Picnic Shelter
-  Picnic Shelter Access
-  Trail 1 - 0.20mi
-  Trail 2 - 0.47mi



0 50 100 200 Meters

0 200 400 800 Feet



Map date: 15 June 2010